

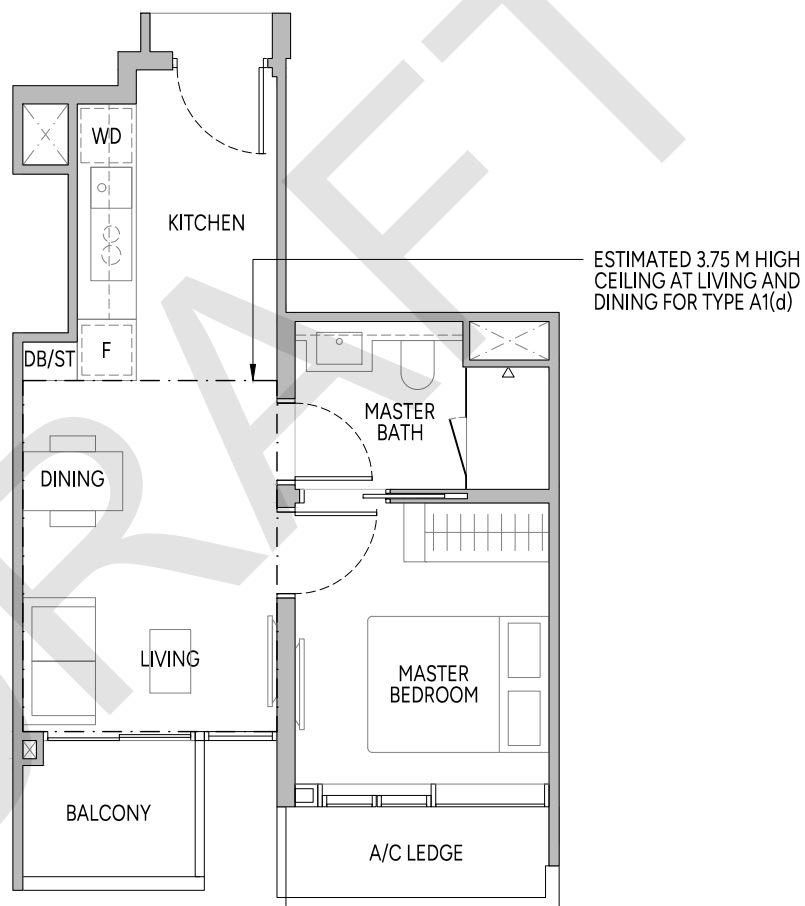
1-BEDROOM

TYPE A1
43 sq m | 463 sq ft

BLK 28
#03-02 to #31-02

TYPE A1(d)
43 sq m | 463 sq ft

#32-02



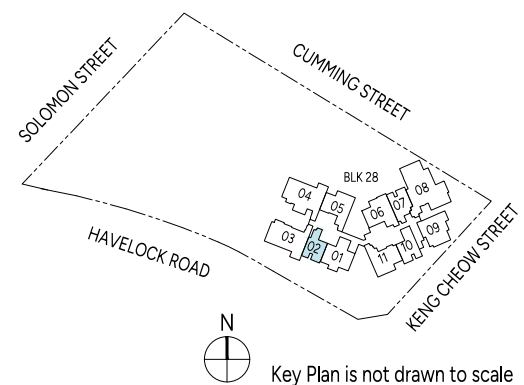
PLEASE REFER TO THE RESIDENTIAL STOREY KEY PLANS AND THE APPROVED BUILDING PLANS FOR THE POSITION OF THE LEDGES (WHICH INCLUDE BUT ARE NOT LIMITED TO ANY REINFORCED CONCRETE LEDGES, AND EXCLUDE AIR-CONDITIONER (A/C) LEDGE), WHICH DO NOT FORM PART OF THE STRATA AREA OF THE UNIT.



LEGEND (WHERE APPLICABLE)

| | | | |
|------------------------------------------|-------------------------------------------------|------------------------|-----------------------------------------|
| F Fridge | DW Dishwasher | CH Wine Chiller | DB/ST Distribution Board/Storage |
| WD Washer cum Dryer | W/D Washer and Dryer | WC Water Closet | A/C Air-Conditioner |
| Wall not allowed to be hacked or altered | Services void space (excluded from strata area) | | |

Area includes air-conditioner (A/C) ledge and balcony where applicable, and excludes among others, the Ledges (as depicted in the approved building plans, which include but are not limited to any reinforced concrete ledges, and exclude air-conditioner (A/C) ledge). The plans are subject to change as may be required by relevant authorities. All floor plans and areas are subject to final survey. The balcony shall not be enclosed unless with the approved balcony screen, more particularly illustrated under the header "Approved Balcony Screen". Please refer to the letter containing the Particulars, Documents and Information relating to the unit and the development, for the floor plan relating to the unit you intend to purchase. The Sale and Purchase Agreement contains the entire agreement between the developer and the purchaser and supersedes and cancels in all respects all previous representations, warranties, promises, inducements or statements of intention, whether written or oral made by the developer and/ or the developer's agent which are not embodied in the Sale and Purchase Agreement.



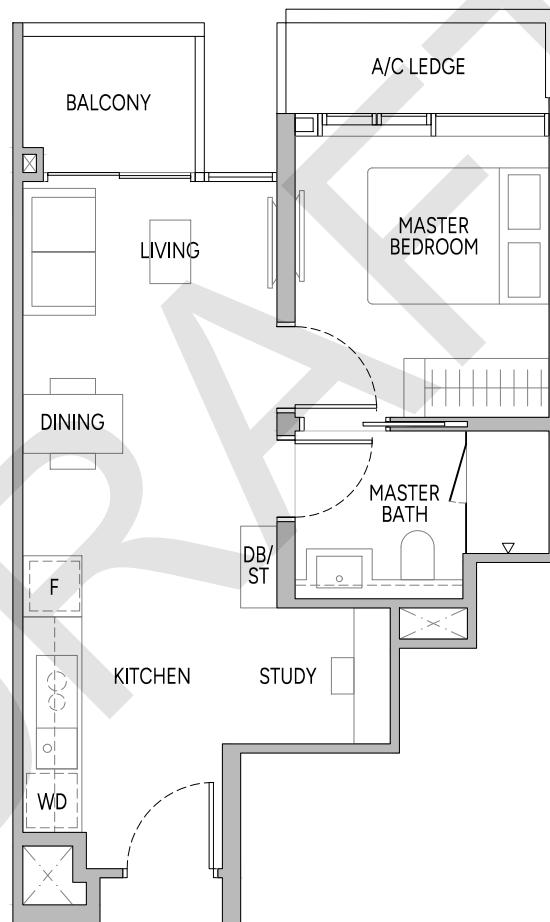
1-BEDROOM + STUDY

TYPE A2S

47 sq m | 506 sq ft

BLK 28

#03-07 to #37-07



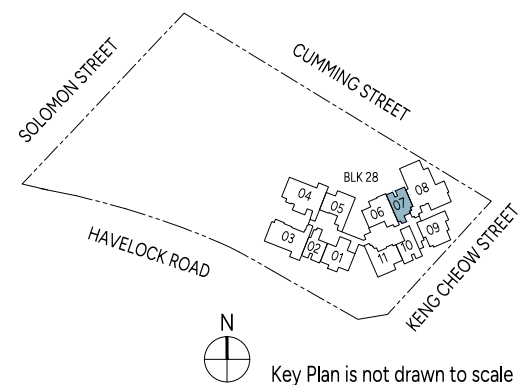
PLEASE REFER TO THE RESIDENTIAL STOREY KEY PLANS AND THE APPROVED BUILDING PLANS FOR THE POSITION OF THE LEDGES (WHICH INCLUDE BUT ARE NOT LIMITED TO ANY REINFORCED CONCRETE LEDGES, AND EXCLUDE AIR-CONDITIONER (A/C) LEDGE), WHICH DO NOT FORM PART OF THE STRATA AREA OF THE UNIT.



LEGEND (WHERE APPLICABLE)

| | | | |
|------------------------------------------|-------------------------------------------------|------------------------|-----------------------------------------|
| F Fridge | DW Dishwasher | CH Wine Chiller | DB/ST Distribution Board/Storage |
| WD Washer cum Dryer | W/D Washer and Dryer | WC Water Closet | A/C Air-Conditioner |
| Wall not allowed to be hacked or altered | Services void space (excluded from strata area) | | |

Area includes air-conditioner (A/C) ledge and balcony where applicable, and excludes among others, the Ledges (as depicted in the approved building plans, which include but are not limited to any reinforced concrete ledges, and exclude air-conditioner (A/C) ledge). The plans are subject to change as may be required by relevant authorities. All floor plans and areas are subject to final survey. The balcony shall not be enclosed unless with the approved balcony screen, more particularly illustrated under the header "Approved Balcony Screen". Please refer to the letter containing the Particulars, Documents and Information relating to the unit and the development, for the floor plan relating to the unit you intend to purchase. The Sale and Purchase Agreement contains the entire agreement between the developer and the purchaser and supersedes and cancels in all respects all previous representations, warranties, promises, inducements or statements of intention, whether written or oral made by the developer and/or the developer's agent which are not embodied in the Sale and Purchase Agreement.



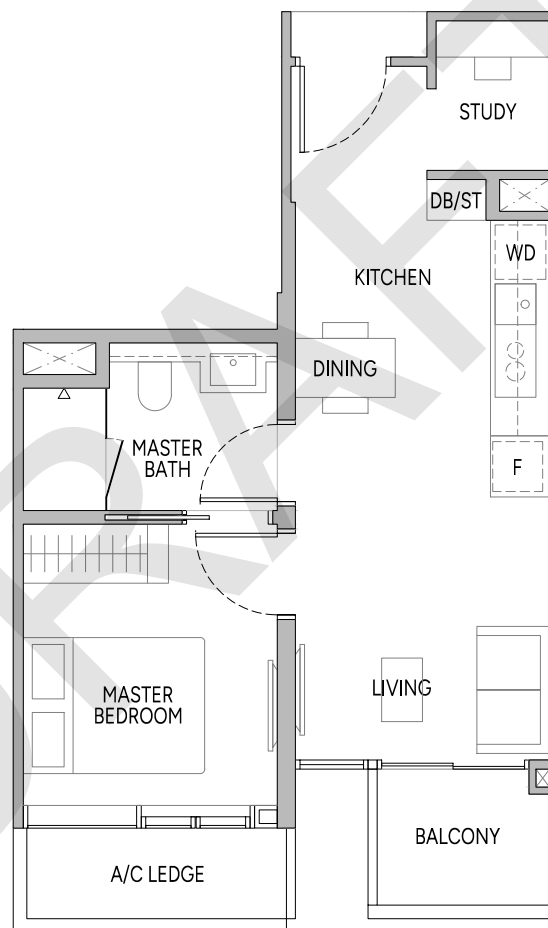
1-BEDROOM + STUDY

TYPE A3S

47 sq m | 506 sq ft

BLK 28

#03-10 to #39-10



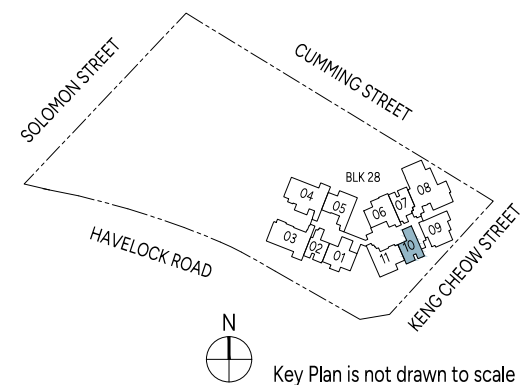
PLEASE REFER TO THE RESIDENTIAL STOREY KEY PLANS AND THE APPROVED BUILDING PLANS FOR THE POSITION OF THE LEDGES (WHICH INCLUDE BUT ARE NOT LIMITED TO ANY REINFORCED CONCRETE LEDGES, AND EXCLUDE AIR-CONDITIONER (A/C) LEDGE), WHICH DO NOT FORM PART OF THE STRATA AREA OF THE UNIT.



LEGEND (WHERE APPLICABLE)

| | | | |
|------------------------------------------|-------------------------------------------------|------------------------|-----------------------------------------|
| F Fridge | DW Dishwasher | CH Wine Chiller | DB/ST Distribution Board/Storage |
| WD Washer cum Dryer | W/D Washer and Dryer | WC Water Closet | A/C Air-Conditioner |
| Wall not allowed to be hacked or altered | Services void space (excluded from strata area) | | |

Area includes air-conditioner (A/C) ledge and balcony where applicable, and excludes among others, the Ledges (as depicted in the approved building plans, which include but are not limited to any reinforced concrete ledges, and exclude air-conditioner (A/C) ledge). The plans are subject to change as may be required by relevant authorities. All floor plans and areas are subject to final survey. The balcony shall not be enclosed unless with the approved balcony screen, more particularly illustrated under the header "Approved Balcony Screen". Please refer to the letter containing the Particulars, Documents and Information relating to the unit and the development, for the floor plan relating to the unit you intend to purchase. The Sale and Purchase Agreement contains the entire agreement between the developer and the purchaser and supersedes and cancels in all respects all previous representations, warranties, promises, inducements or statements of intention, whether written or oral made by the developer and/ or the developer's agent which are not embodied in the Sale and Purchase Agreement.

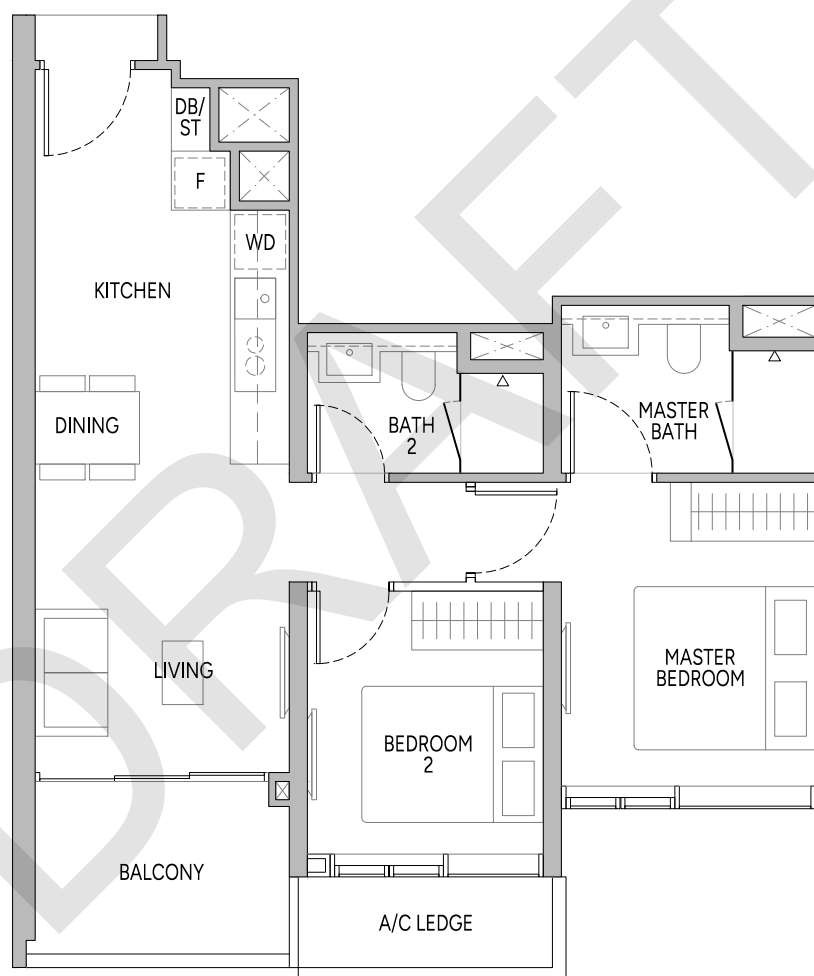


Key Plan is not drawn to scale

2-BEDROOM

TYPE B1
66 sq m | 710 sq ft

BLK 28
 #03-11 to #39-11



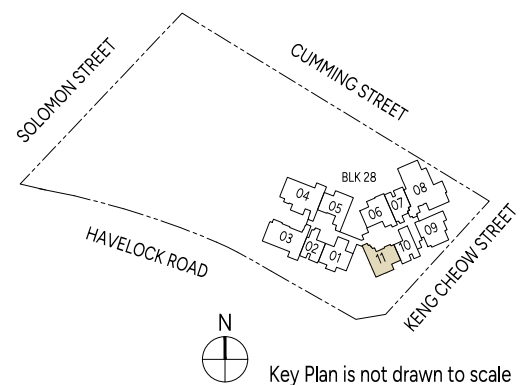
PLEASE REFER TO THE RESIDENTIAL STOREY KEY PLANS AND THE APPROVED BUILDING PLANS FOR THE POSITION OF THE LEDGES (WHICH INCLUDE BUT ARE NOT LIMITED TO ANY REINFORCED CONCRETE LEDGES, AND EXCLUDE AIR-CONDITIONER (A/C) LEDGE), WHICH DO NOT FORM PART OF THE STRATA AREA OF THE UNIT.



LEGEND (WHERE APPLICABLE)

- | | | | |
|------------------------------------------|-------------------------------------------------|------------------------|-----------------------------------------|
| F Fridge | DW Dishwasher | CH Wine Chiller | DB/ST Distribution Board/Storage |
| WD Washer cum Dryer | W/D Washer and Dryer | WC Water Closet | A/C Air-Conditioner |
| Wall not allowed to be hacked or altered | Services void space (excluded from strata area) | | |

Area includes air-conditioner (A/C) ledge and balcony where applicable, and excludes among others, the Ledges (as depicted in the approved building plans, which include but are not limited to any reinforced concrete ledges, and exclude air-conditioner (A/C) ledge). The plans are subject to change as may be required by relevant authorities. All floor plans and areas are subject to final survey. The balcony shall not be enclosed unless with the approved balcony screen, more particularly illustrated under the header "Approved Balcony Screen". Please refer to the letter containing the Particulars, Documents and Information relating to the unit and the development, for the floor plan relating to the unit you intend to purchase. The Sale and Purchase Agreement contains the entire agreement between the developer and the purchaser and supersedes and cancels in all respects all previous representations, warranties, promises, inducements or statements of intention, whether written or oral made by the developer and/ or the developer's agent which are not embodied in the Sale and Purchase Agreement.



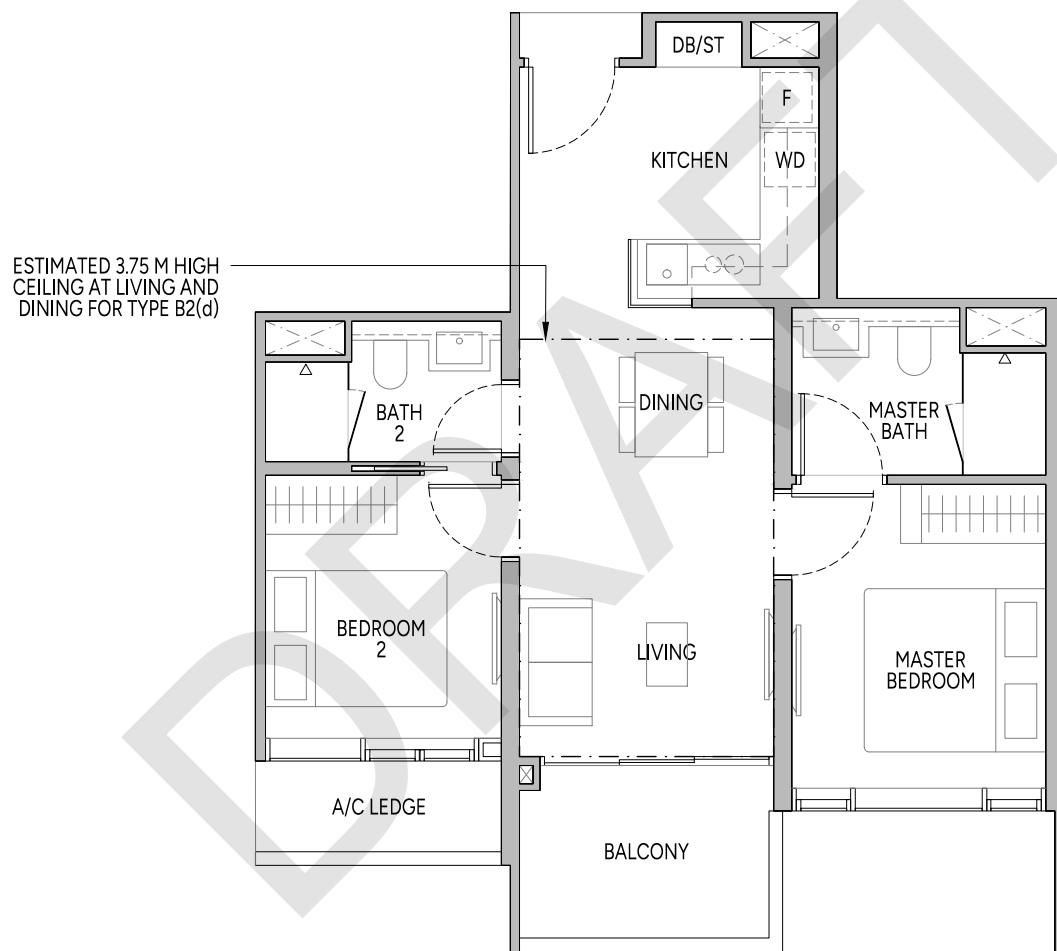
2-BEDROOM

TYPE B2
65 sq m | 700 sq ft

BLK 28
#03-01 to #31-01

TYPE B2(d)
65 sq m | 700 sq ft

#32-01



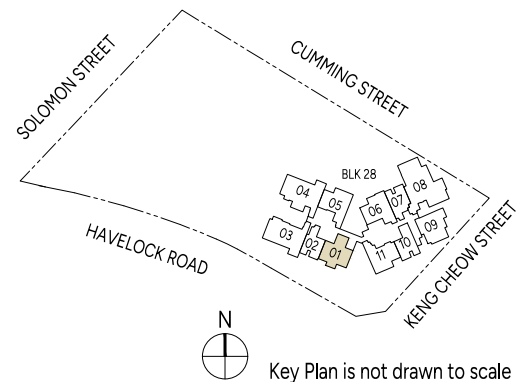
PLEASE REFER TO THE RESIDENTIAL STOREY KEY PLANS AND THE APPROVED BUILDING PLANS FOR THE POSITION OF THE LEDGES (WHICH INCLUDE BUT ARE NOT LIMITED TO ANY REINFORCED CONCRETE LEDGES, AND EXCLUDE AIR-CONDITIONER (A/C) LEDGE), WHICH DO NOT FORM PART OF THE STRATA AREA OF THE UNIT.



LEGEND (WHERE APPLICABLE)

- | | | | |
|------------------------------------------|-------------------------------------------------|------------------------|-----------------------------------------|
| F Fridge | DW Dishwasher | CH Wine Chiller | DB/ST Distribution Board/Storage |
| WD Washer cum Dryer | W/D Washer and Dryer | WC Water Closet | A/C Air-Conditioner |
| Wall not allowed to be hacked or altered | Services void space (excluded from strata area) | | |

Area includes air-conditioner (A/C) ledge and balcony where applicable, and excludes among others, the Ledges (as depicted in the approved building plans, which include but are not limited to any reinforced concrete ledges, and exclude air-conditioner (A/C) ledge). The plans are subject to change as may be required by relevant authorities. All floor plans and areas are subject to final survey. The balcony shall not be enclosed unless with the approved balcony screen, more particularly illustrated under the header "Approved Balcony Screen". Please refer to the letter containing the Particulars, Documents and Information relating to the unit and the development, for the floor plan relating to the unit you intend to purchase. The Sale and Purchase Agreement contains the entire agreement between the developer and the purchaser and supersedes and cancels in all respects all previous representations, warranties, promises, inducements or statements of intention, whether written or oral made by the developer and/ or the developer's agent which are not embodied in the Sale and Purchase Agreement.



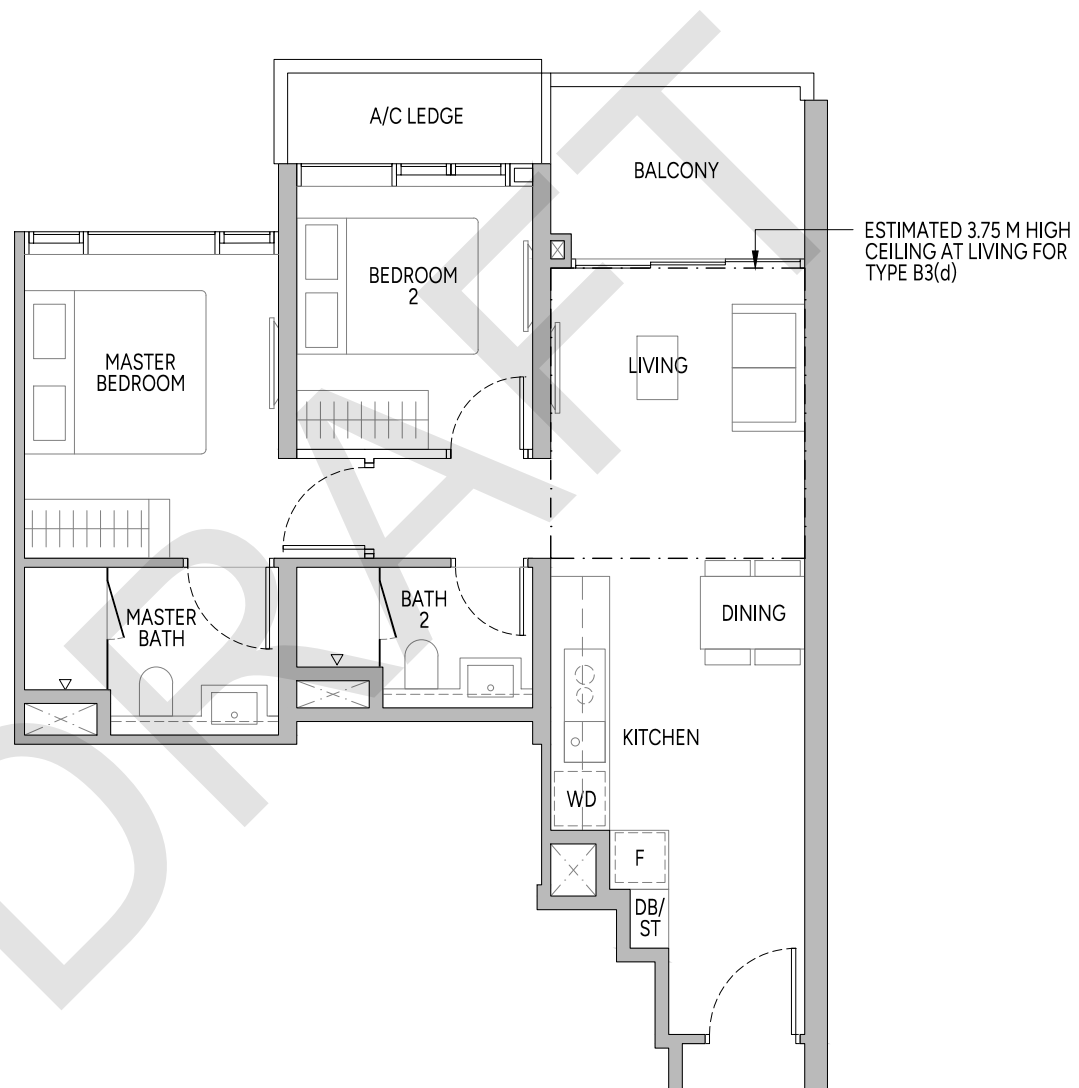
2-BEDROOM

TYPE B3
67 sq m | 721 sq ft

BLK 28
#03-05 to #31-05

TYPE B3(d)
67 sq m | 721 sq ft

#32-05



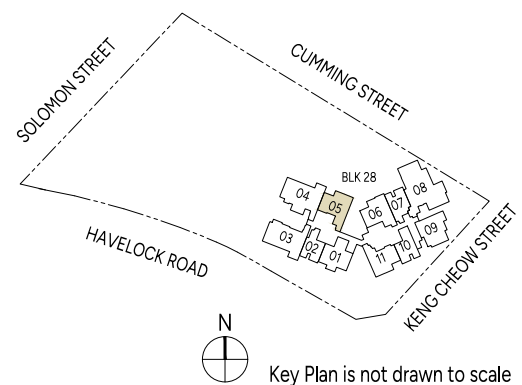
PLEASE REFER TO THE RESIDENTIAL STOREY KEY PLANS AND THE APPROVED BUILDING PLANS FOR THE POSITION OF THE LEDGES (WHICH INCLUDE BUT ARE NOT LIMITED TO ANY REINFORCED CONCRETE LEDGES, AND EXCLUDE AIR-CONDITIONER (A/C) LEDGE), WHICH DO NOT FORM PART OF THE STRATA AREA OF THE UNIT.



LEGEND (WHERE APPLICABLE)

- | | | | |
|------------------------------------------|-------------------------------------------------|------------------------|-----------------------------------------|
| F Fridge | DW Dishwasher | CH Wine Chiller | DB/ST Distribution Board/Storage |
| WD Washer cum Dryer | W/D Washer and Dryer | WC Water Closet | A/C Air-Conditioner |
| Wall not allowed to be hacked or altered | Services void space (excluded from strata area) | | |

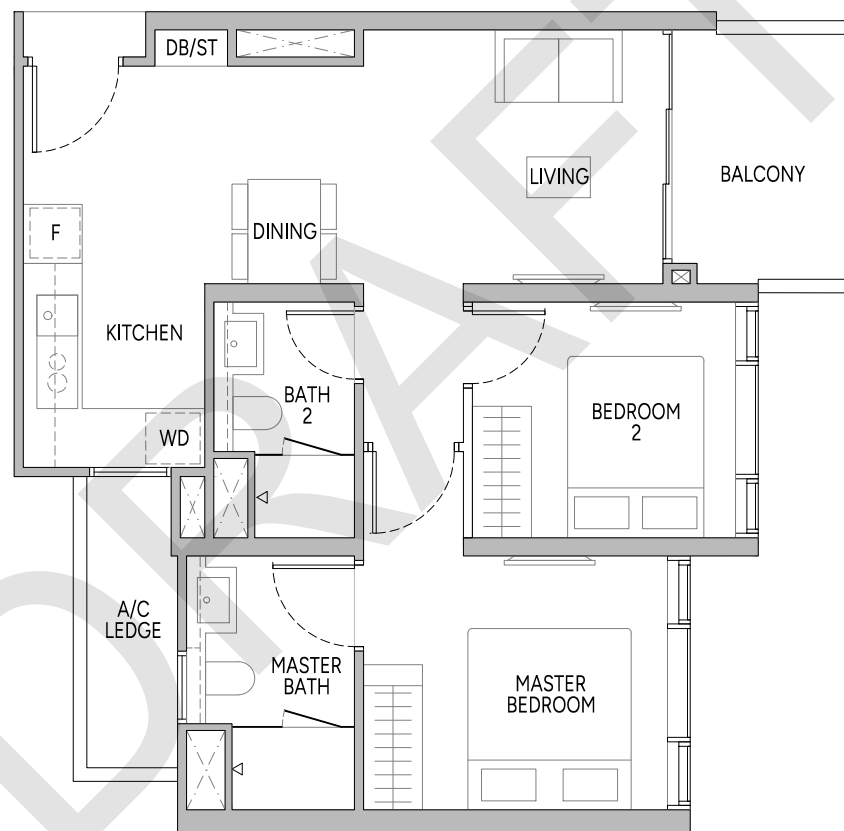
Area includes air-conditioner (A/C) ledge and balcony where applicable, and excludes among others, the Ledges (as depicted in the approved building plans, which include but are not limited to any reinforced concrete ledges, and exclude air-conditioner (A/C) ledge). The plans are subject to change as may be required by relevant authorities. All floor plans and areas are subject to final survey. The balcony shall not be enclosed unless with the approved balcony screen, more particularly illustrated under the header "Approved Balcony Screen". Please refer to the letter containing the Particulars, Documents and Information relating to the unit and the development, for the floor plan relating to the unit you intend to purchase. The Sale and Purchase Agreement contains the entire agreement between the developer and the purchaser and supersedes and cancels in all respects all previous representations, warranties, promises, inducements or statements of intention, whether written or oral made by the developer and/ or the developer's agent which are not embodied in the Sale and Purchase Agreement.



2-BEDROOM

TYPE B4
68 sq m | 732 sq ft

BLK 28
 #03-09 to #39-09



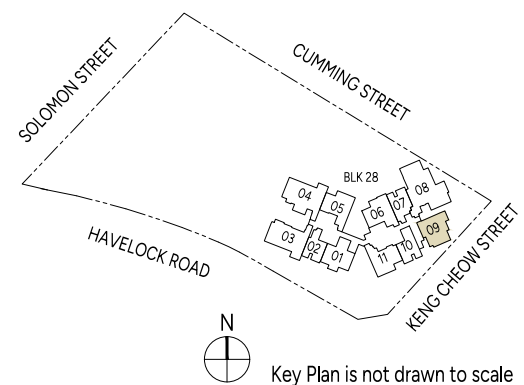
PLEASE REFER TO THE RESIDENTIAL STOREY KEY PLANS AND THE APPROVED BUILDING PLANS FOR THE POSITION OF THE LEDGES (WHICH INCLUDE BUT ARE NOT LIMITED TO ANY REINFORCED CONCRETE LEDGES, AND EXCLUDE AIR-CONDITIONER (A/C) LEDGE), WHICH DO NOT FORM PART OF THE STRATA AREA OF THE UNIT.



LEGEND (WHERE APPLICABLE)

- | | | | |
|------------------------------------------|-------------------------------------------------|------------------------|-----------------------------------------|
| F Fridge | DW Dishwasher | CH Wine Chiller | DB/ST Distribution Board/Storage |
| WD Washer cum Dryer | W/D Washer and Dryer | WC Water Closet | A/C Air-Conditioner |
| Wall not allowed to be hacked or altered | Services void space (excluded from strata area) | | |

Area includes air-conditioner (A/C) ledge and balcony where applicable, and excludes among others, the Ledges (as depicted in the approved building plans, which include but are not limited to any reinforced concrete ledges, and exclude air-conditioner (A/C) ledge). The plans are subject to change as may be required by relevant authorities. All floor plans and areas are subject to final survey. The balcony shall not be enclosed unless with the approved balcony screen, more particularly illustrated under the header "Approved Balcony Screen". Please refer to the letter containing the Particulars, Documents and Information relating to the unit and the development, for the floor plan relating to the unit you intend to purchase. The Sale and Purchase Agreement contains the entire agreement between the developer and the purchaser and supersedes and cancels in all respects all previous representations, warranties, promises, inducements or statements of intention, whether written or oral made by the developer and/ or the developer's agent which are not embodied in the Sale and Purchase Agreement.



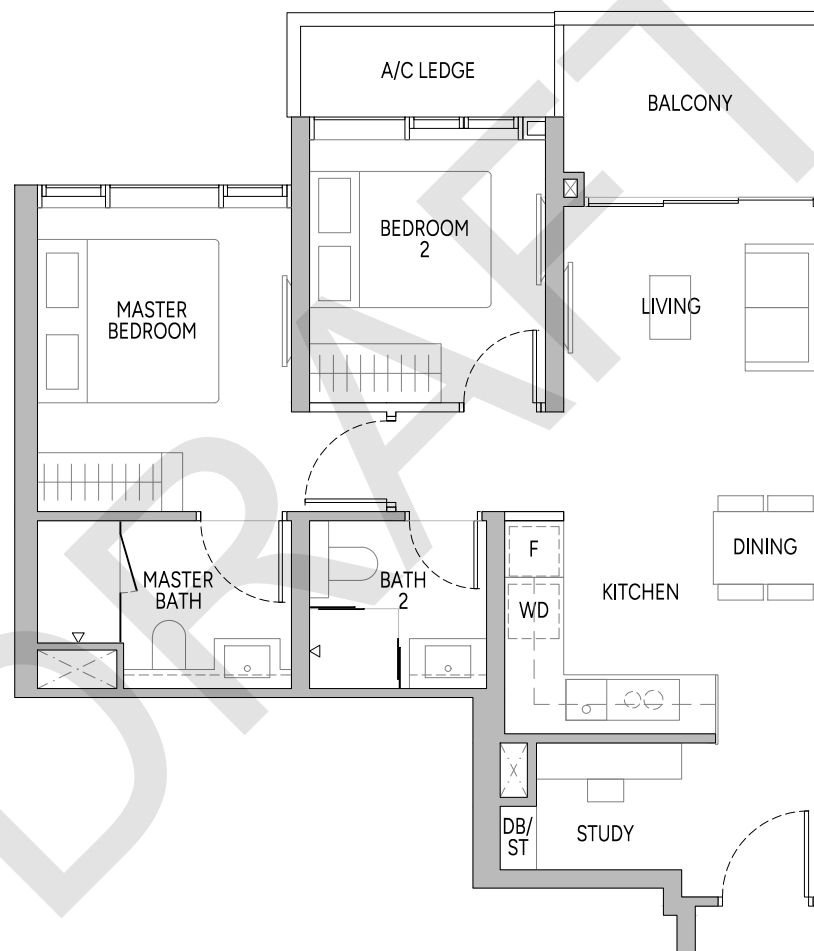
2-BEDROOM + STUDY

TYPE B5S

69 sq m | 743 sq ft

BLK 28

#03-06 to #37-06



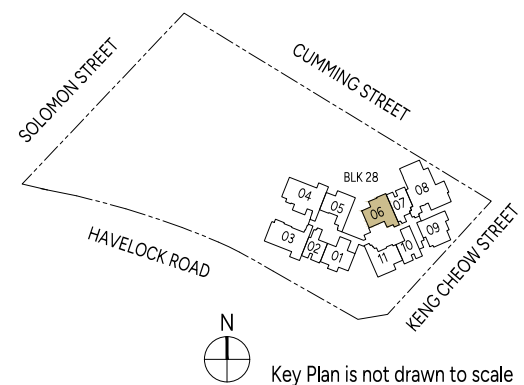
PLEASE REFER TO THE RESIDENTIAL STOREY KEY PLANS AND THE APPROVED BUILDING PLANS FOR THE POSITION OF THE LEDGES (WHICH INCLUDE BUT ARE NOT LIMITED TO ANY REINFORCED CONCRETE LEDGES, AND EXCLUDE AIR-CONDITIONER (A/C) LEDGE), WHICH DO NOT FORM PART OF THE STRATA AREA OF THE UNIT.



LEGEND (WHERE APPLICABLE)

- | | | | |
|------------------------------------------|-------------------------------------------------|------------------------|-----------------------------------------|
| F Fridge | DW Dishwasher | CH Wine Chiller | DB/ST Distribution Board/Storage |
| WD Washer cum Dryer | W/D Washer and Dryer | WC Water Closet | A/C Air-Conditioner |
| Wall not allowed to be hacked or altered | Services void space (excluded from strata area) | | |

Area includes air-conditioner (A/C) ledge and balcony where applicable, and excludes among others, the Ledges (as depicted in the approved building plans, which include but are not limited to any reinforced concrete ledges, and exclude air-conditioner (A/C) ledge). The plans are subject to change as may be required by relevant authorities. All floor plans and areas are subject to final survey. The balcony shall not be enclosed unless with the approved balcony screen, more particularly illustrated under the header "Approved Balcony Screen". Please refer to the letter containing the Particulars, Documents and Information relating to the unit and the development, for the floor plan relating to the unit you intend to purchase. The Sale and Purchase Agreement contains the entire agreement between the developer and the purchaser and supersedes and cancels in all respects all previous representations, warranties, promises, inducements or statements of intention, whether written or oral made by the developer and/ or the developer's agent which are not embodied in the Sale and Purchase Agreement.



Key Plan is not drawn to scale

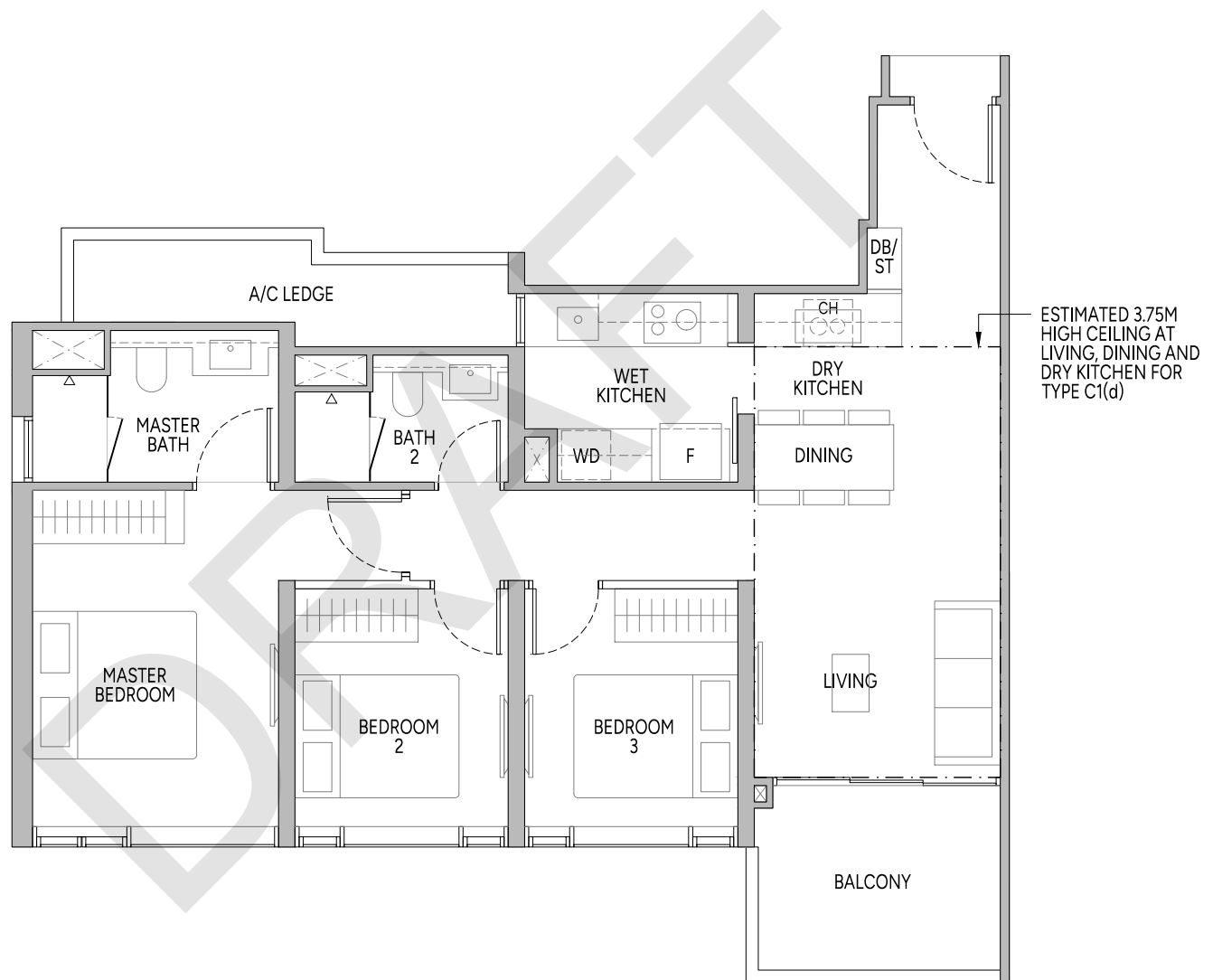
3-BEDROOM

TYPE C1
92 sq m | 990 sq ft

BLK 28
#05-03 to #31-03

TYPE C1(d)
92 sq m | 990 sq ft

#32-03



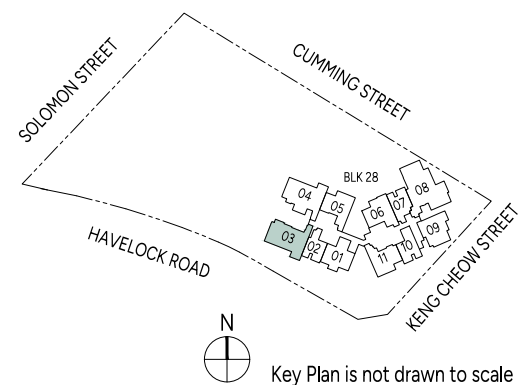
PLEASE REFER TO THE RESIDENTIAL STOREY KEY PLANS AND THE APPROVED BUILDING PLANS FOR THE POSITION OF THE LEDGES (WHICH INCLUDE BUT ARE NOT LIMITED TO ANY REINFORCED CONCRETE LEDGES, AND EXCLUDE AIR-CONDITIONER (A/C) LEDGE), WHICH DO NOT FORM PART OF THE STRATA AREA OF THE UNIT.



LEGEND (WHERE APPLICABLE)

| | | | |
|------------------------------------------|-------------------------------------------------|------------------------|-----------------------------------------|
| F Fridge | DW Dishwasher | CH Wine Chiller | DB/ST Distribution Board/Storage |
| WD Washer cum Dryer | W/D Washer and Dryer | WC Water Closet | A/C Air-Conditioner |
| Wall not allowed to be hacked or altered | Services void space (excluded from strata area) | | |

Area includes air-conditioner (A/C) ledge and balcony where applicable, and excludes among others, the Ledges (as depicted in the approved building plans, which include but are not limited to any reinforced concrete ledges, and exclude air-conditioner (A/C) ledge). The plans are subject to change as may be required by relevant authorities. All floor plans and areas are subject to final survey. The balcony shall not be enclosed unless with the approved balcony screen, more particularly illustrated under the header "Approved Balcony Screen". Please refer to the letter containing the Particulars, Documents and Information relating to the unit and the development, for the floor plan relating to the unit you intend to purchase. The Sale and Purchase Agreement contains the entire agreement between the developer and the purchaser and supersedes and cancels in all respects all previous representations, warranties, promises, inducements or statements of intention, whether written or oral made by the developer and/ or the developer's agent which are not embodied in the Sale and Purchase Agreement.



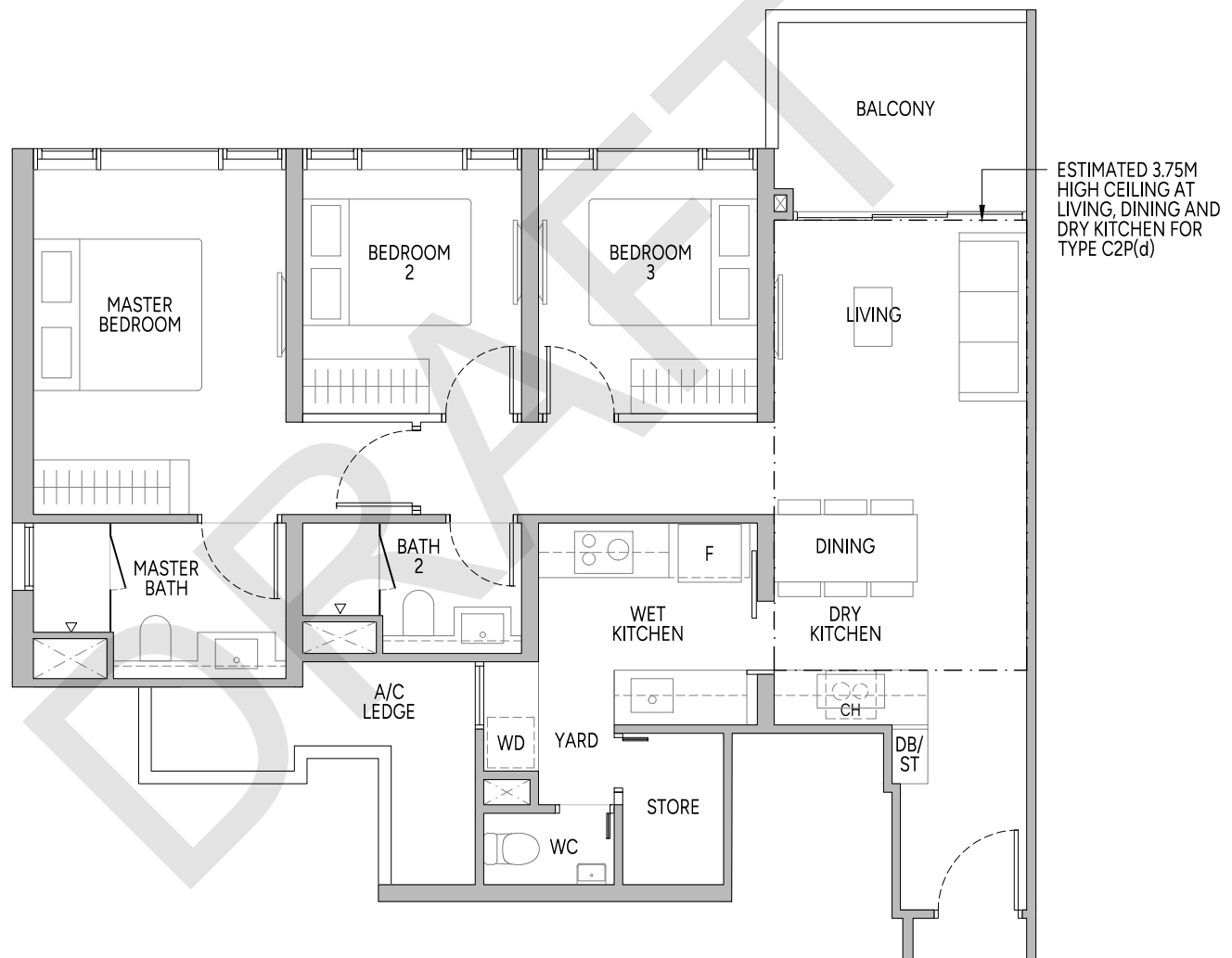
3-BEDROOM PREMIUM

TYPE C2P
99 sq m | 1066 sq ft

BLK 28
#04-04 to #31-04

TYPE C2P(d)
99 sq m | 1066 sq ft

#32-04



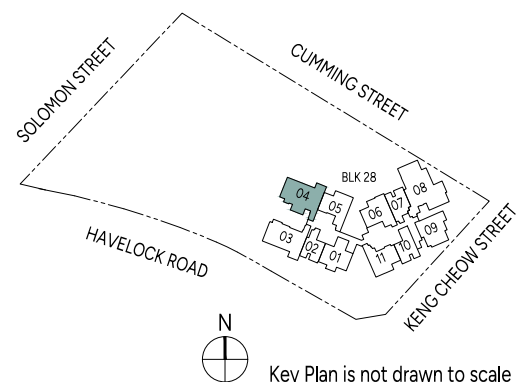
PLEASE REFER TO THE RESIDENTIAL STOREY KEY PLANS AND THE APPROVED BUILDING PLANS FOR THE POSITION OF THE LEDGES (WHICH INCLUDE BUT ARE NOT LIMITED TO ANY REINFORCED CONCRETE LEDGES, AND EXCLUDE AIR-CONDITIONER (A/C) LEDGE), WHICH DO NOT FORM PART OF THE STRATA AREA OF THE UNIT.



LEGEND (WHERE APPLICABLE)

- | | | | | | | | |
|----|------------------------------------------|-----|-------------------------------------------------|----|--------------|-------|----------------------------|
| F | Fridge | DW | Dishwasher | CH | Wine Chiller | DB/ST | Distribution Board/Storage |
| WD | Washer cum Dryer | W/D | Washer and Dryer | WC | Water Closet | A/C | Air-Conditioner |
| | Wall not allowed to be hacked or altered | | Services void space (excluded from strata area) | | | | |

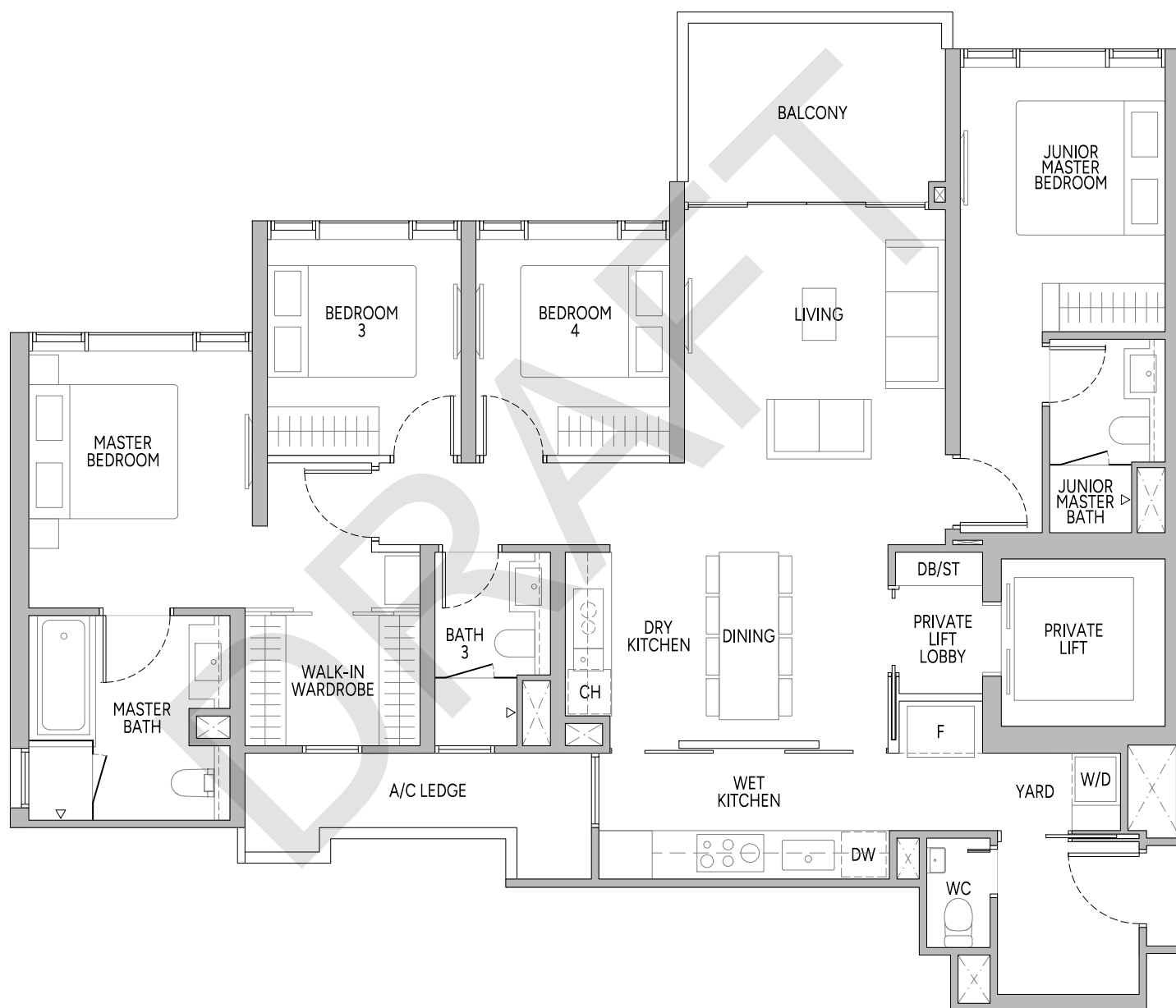
Area includes air-conditioner (A/C) ledge and balcony where applicable, and excludes among others, the Ledges (as depicted in the approved building plans, which include but are not limited to any reinforced concrete ledges, and exclude air-conditioner (A/C) ledge). The plans are subject to change as may be required by relevant authorities. All floor plans and areas are subject to final survey. The balcony shall not be enclosed unless with the approved balcony screen, more particularly illustrated under the header "Approved Balcony Screen". Please refer to the letter containing the Particulars, Documents and Information relating to the unit and the development, for the floor plan relating to the unit you intend to purchase. The Sale and Purchase Agreement contains the entire agreement between the developer and the purchaser and supersedes and cancels in all respects all previous representations, warranties, promises, inducements or statements of intention, whether written or oral made by the developer and/ or the developer's agent which are not embodied in the Sale and Purchase Agreement.



4-BEDROOM PREMIUM

TYPE D1P
141 sq m | 1518 sq ft

BLK 28
 #03-08 to #37-08



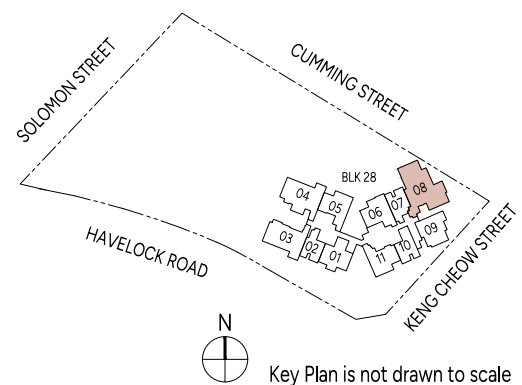
PLEASE REFER TO THE RESIDENTIAL STOREY KEY PLANS AND THE APPROVED BUILDING PLANS FOR THE POSITION OF THE LEDGES (WHICH INCLUDE BUT ARE NOT LIMITED TO ANY REINFORCED CONCRETE LEDGES, AND EXCLUDE AIR-CONDITIONER (A/C) LEDGE), WHICH DO NOT FORM PART OF THE STRATA AREA OF THE UNIT.



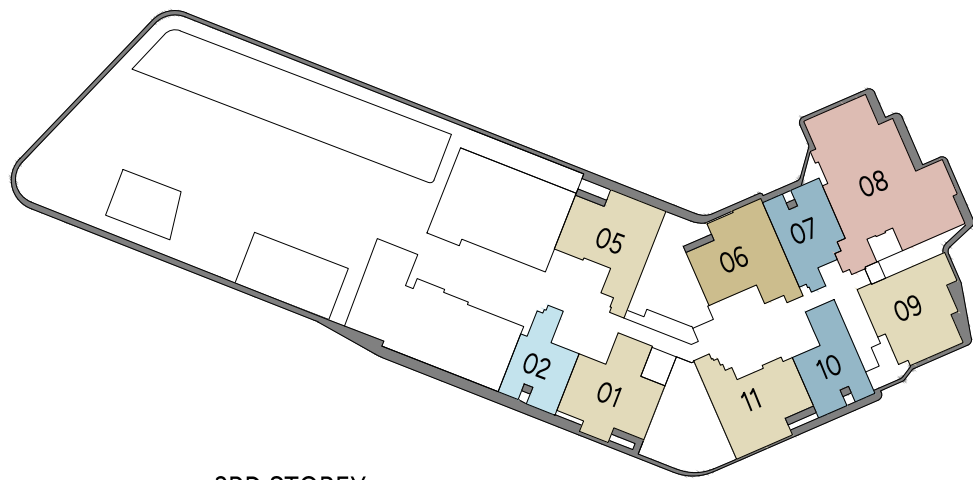
LEGEND (WHERE APPLICABLE)

- | | | | |
|------------------------------------------|-----------------------------|-------------------------------------------------|-----------------------------------------|
| F Fridge | DW Dishwasher | CH Wine Chiller | DB/ST Distribution Board/Storage |
| WD Washer cum Dryer | W/D Washer and Dryer | WC Water Closet | A/C Air-Conditioner |
| Wall not allowed to be hacked or altered | | Services void space (excluded from strata area) | |

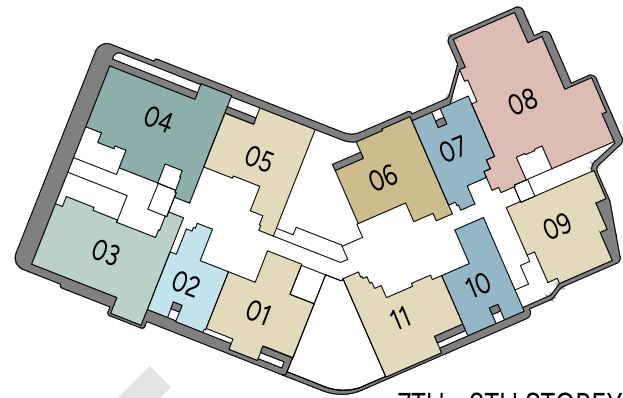
Area includes air-conditioner (A/C) ledge and balcony where applicable, and excludes among others, the Ledges (as depicted in the approved building plans, which include but are not limited to any reinforced concrete ledges, and exclude air-conditioner (A/C) ledge). The plans are subject to change as may be required by relevant authorities. All floor plans and areas are subject to final survey. The balcony shall not be enclosed unless with the approved balcony screen, more particularly illustrated under the header "Approved Balcony Screen". Please refer to the letter containing the Particulars, Documents and Information relating to the unit and the development, for the floor plan relating to the unit you intend to purchase. The Sale and Purchase Agreement contains the entire agreement between the developer and the purchaser and supersedes and cancels in all respects all previous representations, warranties, promises, inducements or statements of intention, whether written or oral made by the developer and/ or the developer's agent which are not embodied in the Sale and Purchase Agreement.



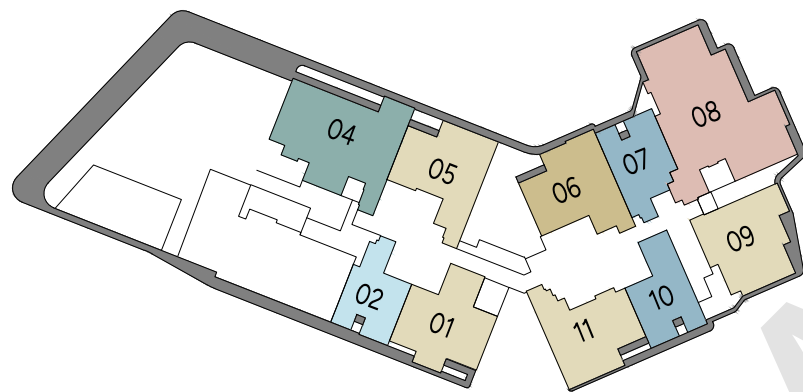
RESIDENTIAL STOREY KEY PLANS



3RD STOREY



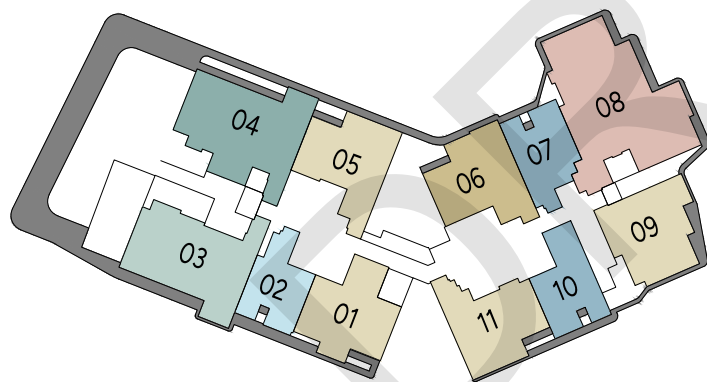
7TH - 8TH STOREY



4TH STOREY



9TH STOREY



5TH STOREY



10TH STOREY



6TH STOREY



11TH - 12TH STOREY



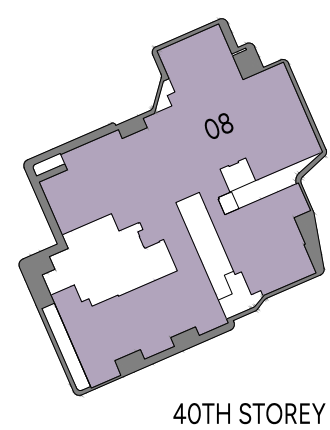
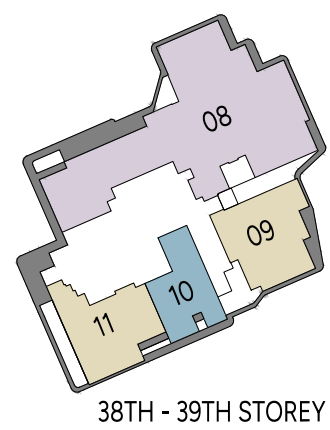
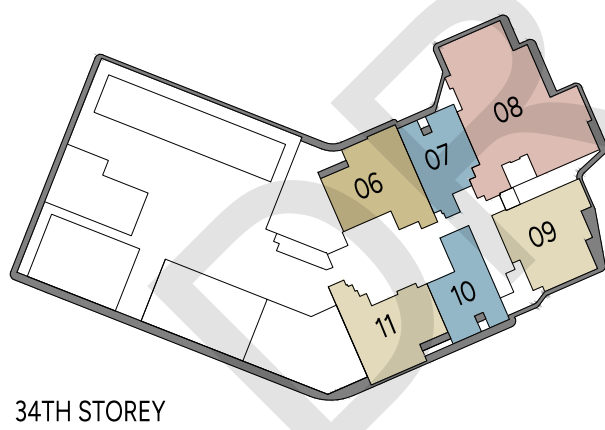
LEGEND

| | | | | |
|---------------------|---------------------|-----------------------|---------------------|-----------|
| 1 - BEDROOM | 2 - BEDROOM | 3 - BEDROOM | 4 - BEDROOM PREMIUM | PENTHOUSE |
| 1 - BEDROOM + STUDY | 2 - BEDROOM + STUDY | 3 - BEDROOM + PREMIUM | SKY SUITE | LEDGE |

Key plans are not drawn to scale. The shading and outline of the key plans are for illustrative purposes only. The boundary lines of the units set out here are not to be taken as a factual representation of the actual units. Kindly refer to the approved building plans for the actual unit outline/boundary lines.

THE LEDGES (WHICH INCLUDE BUT ARE NOT LIMITED TO ANY REINFORCED CONCRETE LEDGES, AND EXCLUDE AIR-CONDITIONER (A/C) LEDGE), DO NOT FORM PART OF THE STRATA AREA OF THE UNIT.

RESIDENTIAL STOREY KEY PLANS



LEGEND

1 - BEDROOM

2 - BEDROOM

3 - BEDROOM

4 - BEDROOM PREMIUM

PENTHOUSE

1 - BEDROOM + STUDY

2 - BEDROOM + STUDY

3 - BEDROOM + PREMIUM

SKY SUITE

LEDGE

Key plans are not drawn to scale. The shading and outline of the key plans are for illustrative purposes only. The boundary lines of the units set out here are not to be taken as a factual representation of the actual units. Kindly refer to the approved building plans for the actual unit outline/boundary lines. THE LEDGES (WHICH INCLUDE BUT ARE NOT LIMITED TO ANY REINFORCED CONCRETE LEDGES, AND EXCLUDE AIR-CONDITIONER (A/C) LEDGE), DO NOT FORM PART OF THE STRATA AREA OF THE UNIT.